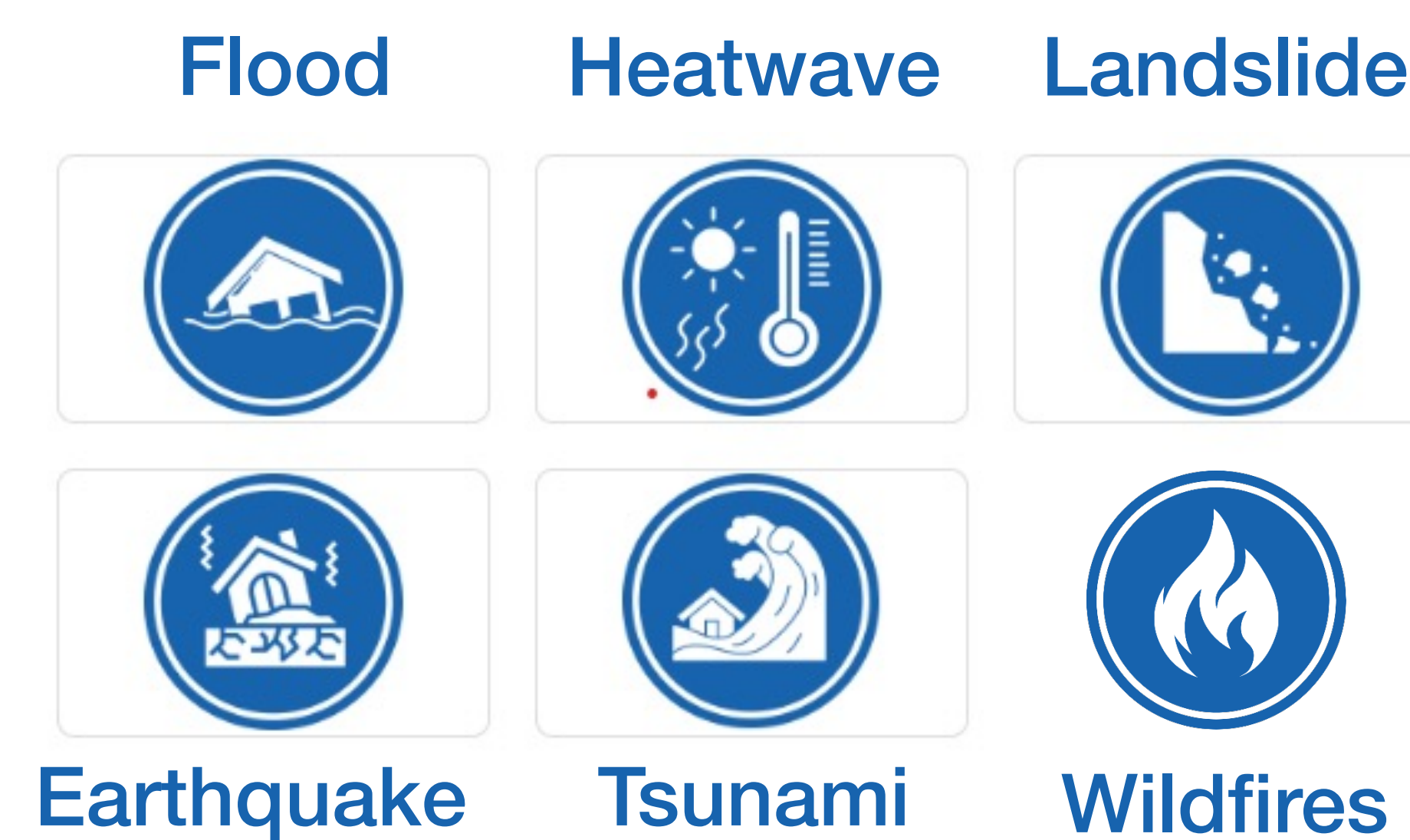
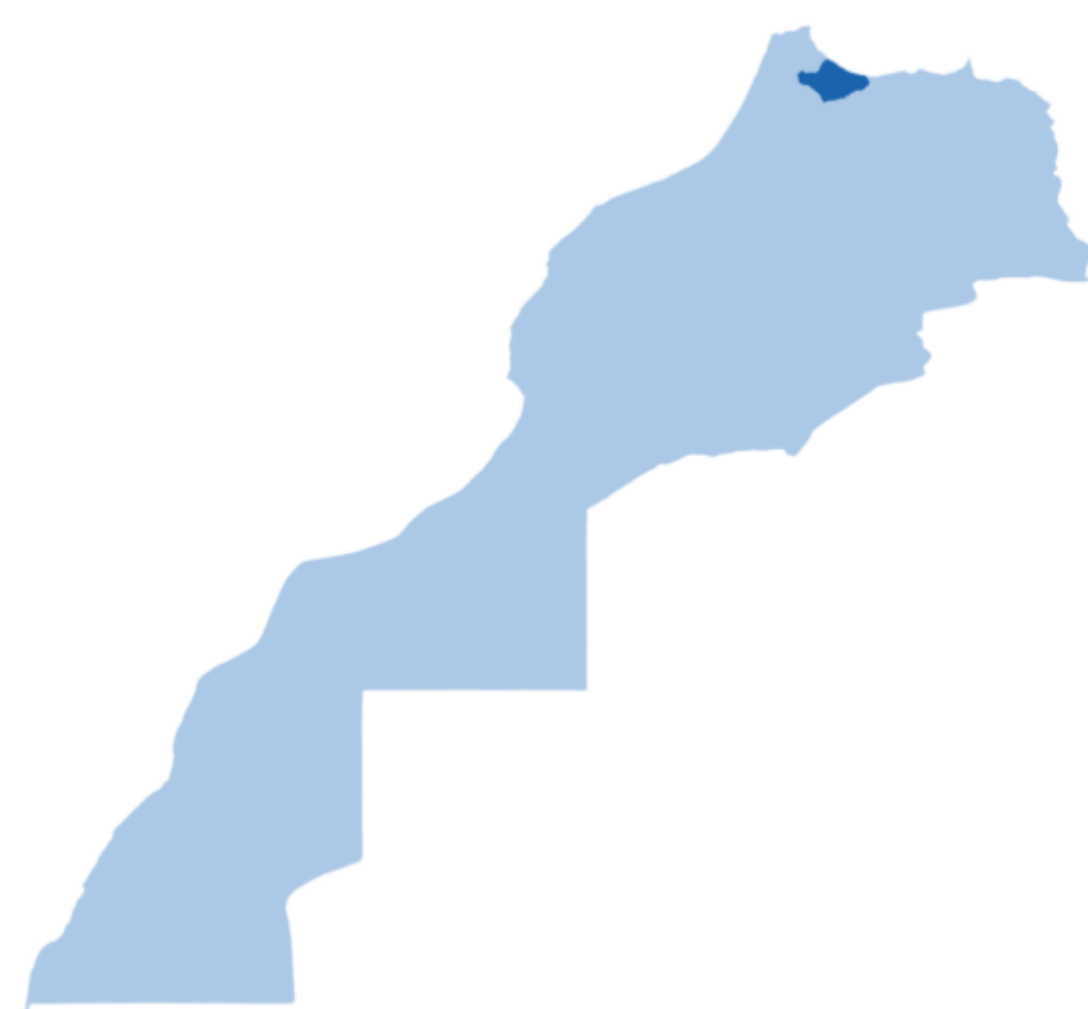


- ☐ Chefchaouen Province is located in northern Morocco
- ☐ The province is mountainous, dominated by the Rif Mountains
- ☐ Population: 411 977 citizens, with 349 519 citizens (85%) in rural areas
- ☐ Chefchaouen province covers an area of 3,443 km<sup>2</sup>, and includes one urban commune, 27 rural communes.



### Main hazards addressed

### Challenges : Chefchaouen province faces many risks

**Floods :** Urban flooding and flash floods particularly in valley regions after heavy rain events

**Landslides:** complex geology, steep slopes and particularly vulnerable to landslides and terrain instability

**Earthquakes:** The province is exposed to moderate seismic risk due to its proximity to active tectonic zones in northern Morocco

**Forest Fires/heatwave:** especially during prolonged heat waves and dry summer periods

**Tsunami:** The province is likely to be affected by tsunami

### GOBEYOND solution

- **Risk knowledge:** Multiple hazard data concentrator (hazard map, exposure, vulnerabilities);
- **Preparedness:** function dedicated to draw up operational crisis management plan for each hazard;
- **Monitoring:** capacity to integrate forecast and real-time observation data. Ability to cross-reference vulnerability data and dynamic hazard data (forecast and observation);
- **Dissemination:** logbook, inter-actor sharing of information for coordinated risk management.

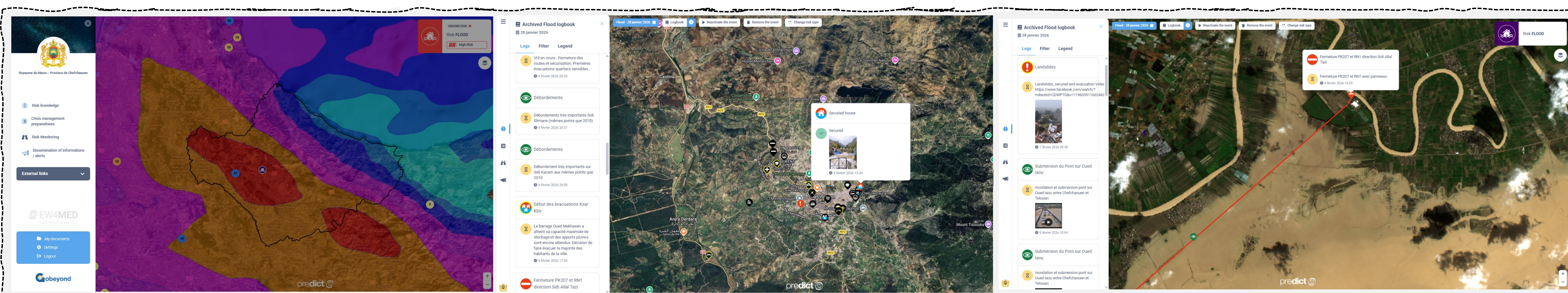


### Use case & results

- Risk anticipation and activation of action plan (140 000 people were protected facing storms on Jan/Feb2026)
- Dynamic dam management during successive storms in northern part of Morocco
- Enhanced support to operational decision-making notably through Early Action Recommendation
- Improved risk management thanks to rapid assessment of flooded area through satellite imagery display

### Lessons learned

- Crucial importance of preparation for effective crisis management
- The advantage of a single, multi-parameter access point to the data needed for crisis management
- Importance of access in rapid response times to continuous updated data for optimal efficiency
- The benefit of 24/7 technical support



ECMWF 48h rainfall accumulation forecast – 29/01/2026

Logbook of Chefchaouen EW4MED platform showing actions carried out during the event – 04/02/2026

Display of flooded area through satellite imagery 10/02/2026 - Chefchaouen EW4MED platform